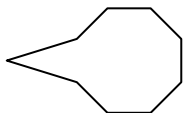




Determine which letter BEST represents the shapes that were used to create the figure shown.

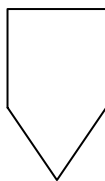
Answers

1)



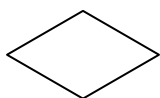
- A. rectangle & triangle
- B. triangle & octagon
- C. hexagon & rectangle
- D. quadrilateral & octagon

2)



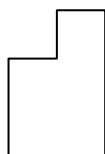
- A. hexagon & octagon
- B. heptagon & hexagon
- C. quadrilateral & triangle
- D. pentagon & triangle

3)



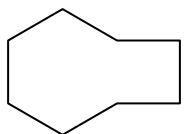
- A. square & triangle
- B. triangle & triangle
- C. square & pentagon
- D. rectangle & square

4)



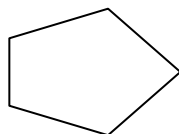
- A. rectangle & triangle
- B. quadrilateral & pentagon
- C. square & square
- D. triangle & quadrilateral

5)



- A. rectangle & quadrilateral
- B. quadrilateral & hexagon
- C. pentagon & rectangle
- D. octagon & square

6)



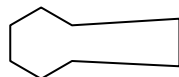
- A. rectangle & square
- B. hexagon & triangle
- C. pentagon & hexagon
- D. quadrilateral & triangle

7)



- A. octagon & pentagon
- B. octagon & square
- C. quadrilateral & heptagon
- D. rectangle & triangle

8)



- A. quadrilateral & hexagon
- B. square & triangle
- C. quadrilateral & pentagon
- D. heptagon & triangle

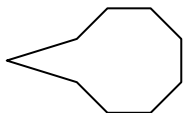
- 1. _____
- 2. _____
- 3. _____
- 4. _____
- 5. _____
- 6. _____
- 7. _____
- 8. _____



Determine which letter BEST represents the shapes that were used to create the figure shown.

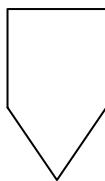
Answers

1)



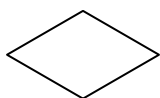
- A. rectangle & triangle
- B. triangle & octagon
- C. hexagon & rectangle
- D. quadrilateral & octagon

2)



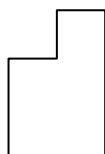
- A. hexagon & octagon
- B. heptagon & hexagon
- C. quadrilateral & triangle
- D. pentagon & triangle

3)



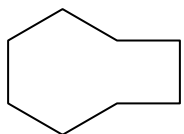
- A. square & triangle
- B. triangle & triangle
- C. square & pentagon
- D. rectangle & square

4)



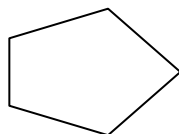
- A. rectangle & triangle
- B. quadrilateral & pentagon
- C. square & square
- D. triangle & quadrilateral

5)



- A. rectangle & quadrilateral
- B. quadrilateral & hexagon
- C. pentagon & rectangle
- D. octagon & square

6)



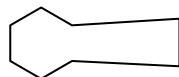
- A. rectangle & square
- B. hexagon & triangle
- C. pentagon & hexagon
- D. quadrilateral & triangle

7)



- A. octagon & pentagon
- B. octagon & square
- C. quadrilateral & heptagon
- D. rectangle & triangle

8)



- A. quadrilateral & hexagon
- B. square & triangle
- C. quadrilateral & pentagon
- D. heptagon & triangle

- 1. **B**
- 2. **C**
- 3. **B**
- 4. **C**
- 5. **B**
- 6. **D**
- 7. **D**
- 8. **A**